



PRODUCT INFO

PRODUCT NAME

Full PTZ

PRODUCT NUMBER

IIS-BPTT6451-100 || IIS-BPTT4030-100

PRODUCT CATEGORY

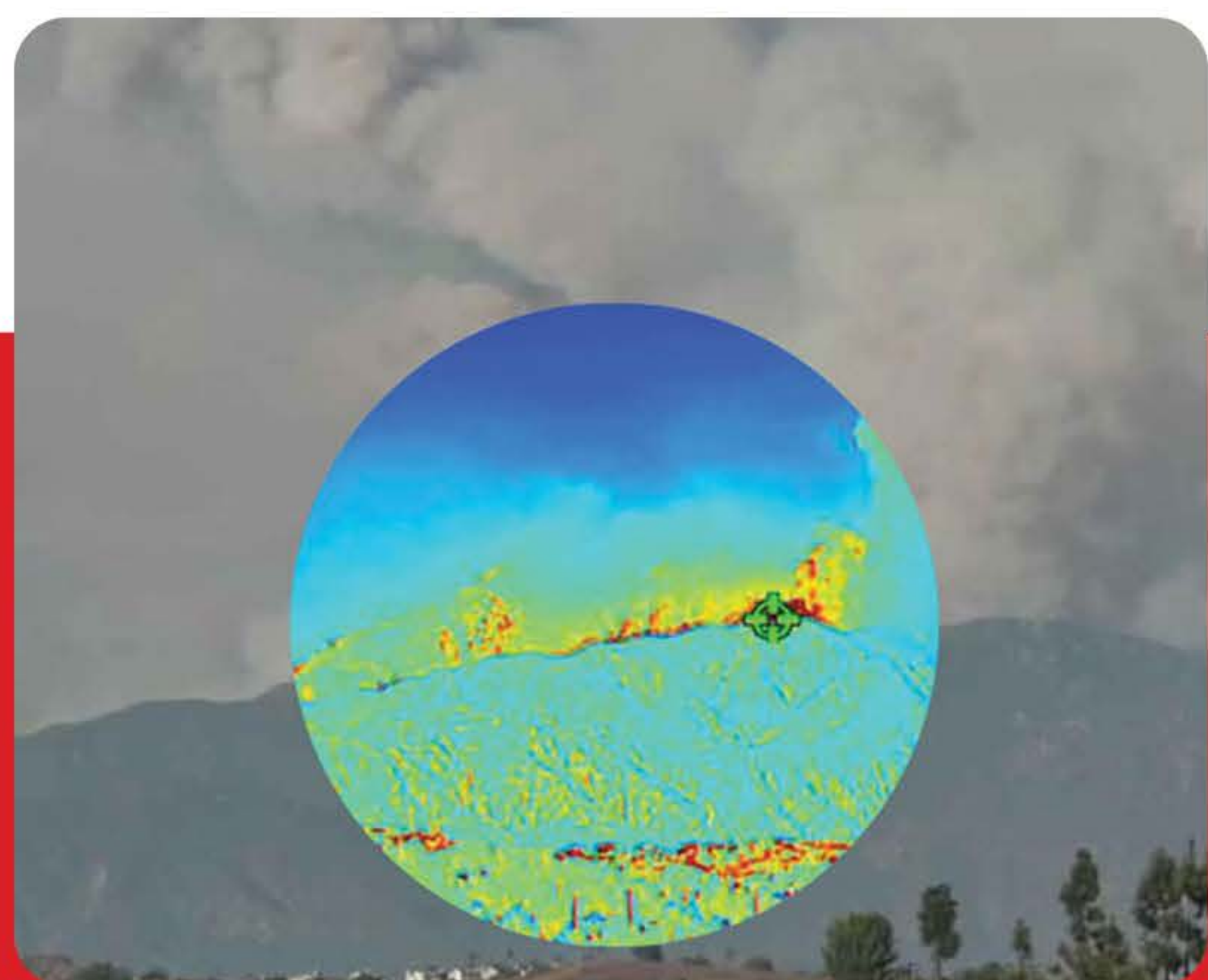
Fixed Camera

PRODUCT PRICE

Contact us for a quote

KEY FEATURES

- VOx uncooled focal plane detector with 640x512 resolution
- NETD $\leq 40\text{mK}$
- 75/100 mm motorized focus thermal lens optional, 40x optical zoom module
- Support human/vehicle detection and fire point detection
- Smart events: intrusion, single line crossing, double line crossing, loitering, wrong way, people counting, enter area, leave area
- Support 3 temperature measurement rule types (point, line, area)
- Support temperature
- Temperature measurement
- Power off self-locking, strong wind resistance
- Anti-frozen, IP66



FULL PTZ BI-SPECTRAL CAMERA



POWERFUL LONG-RANGE THERMAL AND OPTICAL MONITORING

The Full PTZ Bi-Spectral Camera offers advanced bi-spectral imaging with an impressive monitoring range of up to 2 miles—ideal for mid- to long-range applications. Designed for performance in any environment, it delivers continuous real-time monitoring and temperature data collection, even in challenging weather conditions.

Equipped with a built-in pre-alarm system, the camera enables early detection of anomalies—alerting operators before a failure or catastrophic event occurs. With proven capabilities including the detection of a 1m x 1m fire from up to 5 miles away, it's a powerful solution for fire prevention, safety assurance, and operational oversight. Some other key applications include perimeter and site security, thermal monitoring of utility substations and surveillance for mass transit and more.

Seamlessly integrates into SYTIS systems such as GridSafe™, Vehicle Mounted Units, and Mobile Inspection Units (MIU), making it a versatile choice for scalable remote monitoring solutions. NDAA and NFPA 70B + 70E compliant.

CONTACT US

(888) 447-0651

info@sytis.com

www.sytis.com

3474 Empresa Dr. #150

San Luis Obispo CA 93401

TECHNICAL DATA SPECIFICATION

THERMAL MODULE

Image Sensor	Uncooled VOx Focal Plane Arrays
Resolution	Sensor is 640×512. Image can be scaled up to 1280×1024
Pixel Pitch	12 micrometers
NETD	≤ 40 mK
Image Setting	Brightness/Sharpness/Contrast/Mirror/FFC control/2D/3D DNR
Spectral Range	8 ~ 14 micrometers
Pseudo-color Setting	White-hot/Black-hot/Rainbow/Ironbow etc. up to 17 modes

VISIBLE CAMERA

Focus Control	Motorized Focus	
Focal Length	75 mm / 100 mm	
Aperture	F1.0 / F1.0	
Angle of View	H: 8°, V: 6° (75 mm)	H: 4.3°, V: 3.6° (100 mm)
Detection Distance (Fire: 1x1m)	3125 m (75 mm)	4167 m (100 mm)
Detection Distance (Humans: 1.8x0.5m)	3121 m (75 mm)	4167 m (100 mm)
Detection Distance (Vehicles: 4x1.5m)	9583 m (75 mm)	12778 m (100 mm)
Recognition Distance (Humans: 1.8x0.5m)	780 m (75 mm)	1040 m (100 mm)
Recognition Distance (Vehicles: 4x1.5m)	2398 m (75 mm)	3194 m (100 mm)

OPTICAL MODULE

Image Sensor	1/2.8" Sony CMOS	
Max. Resolution	2592 (H)×1520 (V), 4MP	
Shutter Speed	1/5 ~ 1/20,000s	
Min. Illumination	Color: 0.01 Lux @ (F1.2, AGC ON)	B/W: 0.001 Lux
WDR	True WDR	
Focal Length	4.98 ~ 199.3mm, 40x optical zoom	
Aperture	F1.2 ~ F3.5	
Angle of View	H: 59.1° ~ 1.8°, V: 41.8° ~ 1.7°	
Digital Zoom	16x	
Focus Control	Auto/Manual/Semi-automatic	
Mirror	Support	
Defog	Support	
Privacy Masking	Support	
Illumination Distance	IR distance up to 500m (1,640.4 ft)	

PTZ

Pan/Tilt Range	Pan: 0° ~ 360° endless	Tilt: +90° ~ -90°
Pan/ Tilt Speed	Pan: 0.01° ~ 80°/s	Tilt: 0.01° ~ 30°/s
Wiper	Support	
Preset Accuracy	± 0.1°	
Presets	400	
Scan	8 scans, up to 32 presets per scan	
Patrol	12 patrols, up to 32 presets per scan	
Track	6 tracks	
3D Positioning	Support	
Speed Setup	Auto/Manual (0-8)	
Power Off Memory	Support	
Idle Motion	It can activate Preset/Scan/Tour/Pattern if there is no command in the specified period	

VIDEO AND AUDIO

Main Stream	Thermal: 1280×1024, 1280×720, 640×512 @ 25/30fps	Optical: 2592×1520, 2560×1440, 2304×1296, 1920×1080, 1280×720 @ 25/30fps
Sub Stream	Thermal: D1, CIF @ 25/30fps	Optical: D1, VGA, 640×360, CIF, QCIF, QVGA @ 25/30fps
Bit Rate Control	CBR/VBR	
Bit Rate	Thermal Main stream: 100Kbps-8Mbps Thermal Sub stream: 100Kbps-2Mbps	Optical Main stream: 512Kbps-12Mbps Optical Sub stream: 100Kbps-6Mbps
Region of Interest	Off/On (8 Zone, Rectangle)	
Audio Compression	G711A, G711U, AAC, PCM: 16Kbps	

SMART FUNCTION

Smart Detection	Motion detection, Disk alarm, I/O alarm, IVS alarm, Temperature alarm, Audio detection
Smart Function	Support human/vehicle detection and fire point detection (single lens); support temperature measurement, line crossing, intrusion, region entrance/exit
Intelligent Analysis	Support smart analytics like fire detection, Line crossing, Wrong way, Enter area, Leave area (supported only for optical video and vehicles), people counting

TEMPERATURE DETECTION

Temperature Detection	3 temperature measurement rule types (point, line, area)	
Temperature Alarm	Over temperature alarm, Temperature difference alarm	
Accuracy	± 2°C / ±2%	
Response Time	≤ 30ms	
Temperature Range	-20°C to 150°C (-4°F to 302°F)	0°C to 550°C (32°F to 1022°F) Customizable

NETWORK

Protocols	IPv4/IPv6, HTTP, RTSP/RTP/RTCP, TCP/UDP, DHCP, DNS, PPPoE, SMTP, 802.1x
Interoperability	ONVIF, CGI, SDK
Max. User Access	10 Users
Web Viewer	IE11, Chrome, Firefox, Microsoft Edge
Languages	English, Chinese, Polish, Italian, Portuguese, Spanish, Russian, French, Czech, Hungarian

INTERFACE

Network Interface	1 Ethernet (10/100 Base-T) RJ-45 Connector
Audio Interface	2ch Audio In, 2ch Audio Out
Alarm Interface	8ch Alarm In, 4ch Alarm Out
RS485	Support
BNC Output	Support
Reset Button	Support (built-in)
SD Card Slot	Built-in, up to 256GB

GENERAL

Power Supply	DC36V
Power Consumption	Max 150 W
Working Temperature	40°C80°C (-40°F140°F)
Working Humidity	0 ~ 90% RH
Storage Conditions	0 ~ 90% RH
Certifications	CE, FCC
Ingress Protection	IP66
Dimensions	594×330×337mm (23.39×13.78×13.27")
Net Weight	≈ 23kg

Dimensions (mm)

