



## PRODUCT INFO

### PRODUCT NAME

TC-90™

### PRODUCT NUMBER

IIS-TF2519-F2

### PRODUCT CATEGORY

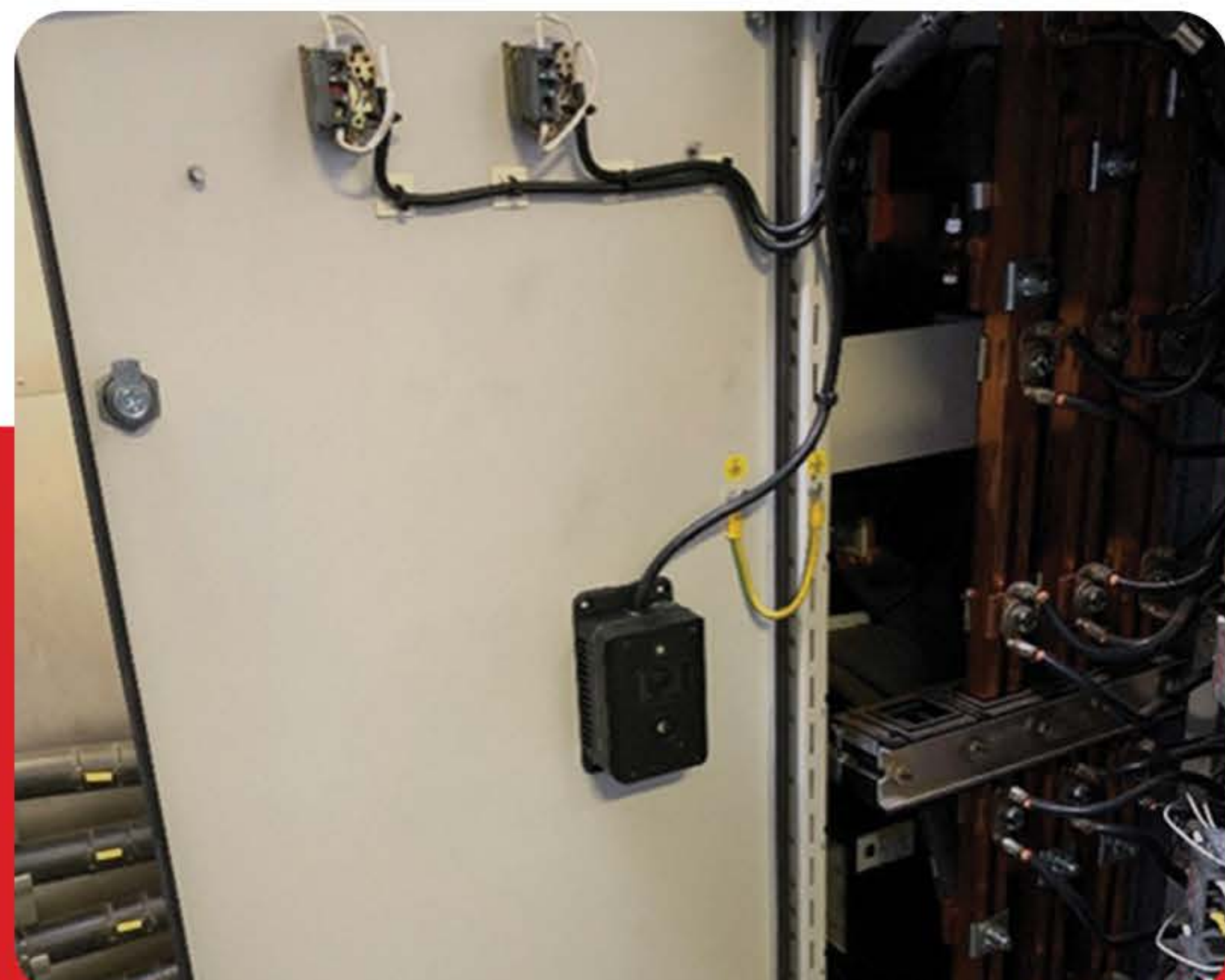
Fixed Camera

### PRODUCT PRICE

Contact us for a quote

## KEY FEATURES

- Uncooled VOx microbolometer with 256x192 resolution
- Sensitivity  $\leq 65\text{mK}$
- Support 3 temperature measurement rule types (Spot, Line, Area)
- Temperature range:  $-40^{\circ}\text{C} \sim 150^{\circ}\text{C}$  ( $-40^{\circ}\text{F} \sim 302^{\circ}\text{F}$ )
- 17 color control
- Up to 20 separate alarms
- DVE Image Enhance
- Multi-bracket easy to install
- Magnetically attaches to metal door



# TC-90™ BI-SPECTRAL CARD CAMERA



## THE NEW STANDARD OF ELECTRICAL ASSET MONITORING

“This technology has already revolutionized the way we diagnose issues by allowing us to safely look inside any low, mid or high voltage system while keeping our technicians out of harm’s way. We believe this system should be considered an essential tool in all situations where ongoing electrical maintenance is required.

Our team is convinced that this technology is a significant part of the future of safety and predictive maintenance. And our goal is to share our success and help spread the word to keep others safe and the grid up and running. This is the new standard at Puget Sound Energy.”

-Ryan Severe, Senior Plant Engineer

## CONTACT US

(888) 447-0651

[info@sytis.com](mailto:info@sytis.com)

[www.sytis.com](http://www.sytis.com)

3474 Empresa Dr. #150

San Luis Obispo CA 93401



TECHNICAL DATA SPECIFICATION

THERMAL CAMERA

Detector Type	Uncooled VOx Microbolometer 256x192
Resolution	256(H)×192(V), Image can be scaled up to 704×576
Thermal Sensitivity (NETD)	≤ 65mK @ F1.0, 300K
Spectral Range	8~14um
Image Setting	Brightness/Sharpness/Contrast/Mirror/FFC/3D DNR
Color Palettes	White-hot/Black-hot/Rainbow/Ironbow etc. up to 17 modes
Lens Type	Fixed
Focus Control	Manual Focus
F No.	F1.0
Angle of View	H: 95°, V:75°

VISIBLE CAMERA

Image Sensor	1/2.8" Sony CMOS
Effective Resolution	1920 (H)×1080(V)
Shutter Speed	1/5 ~ 1/20,000s
Min. Illumination	Color: 0.1Lux @(F1.2, AGC ON), B/W: 0.01Lux
S/N Ratio	More than 55dB
W-LED	1pcs
Max Aperture	F2.0
Angle of View	H: 136.2°, V: 77.3°
Focus Control	Fixed

VIDEO AND AUDIO

Frame Rate	Main Stream-Thermal: D1 @ 25/30fps   Visible: 1920x1080 @25/30fps Sub Stream-Thermal: CIF @25/30fps   Visible: D1/VGA/640x360/CIF/QCIF/QVGA @25/30fps
Bit Rate Control	CBR/VBR
Bit Rate	Thermal: 100Kbps-6Mbps    Visible: main stream - 500Kbps-12Mbps; sub stream: 100Kbps-6Kbps
Digital Zoom	16x
Mirror	Support
Defog	Support
Motion Detection	Support
Privacy Masking	Off/On (4 Area, Rectangle)
DVE Image Enhance	Support

INTELLIGENCE

Intelligent Functions	Motion detection, Disk alarm, I/O alarm, Temperature alarm
IVS	Perimeter, Single Virtual Fences, Double Virtual Fences, Object Left, Object Removed

TEMPERATURE DETECTION

Temperature Detection	Support 3 temperature measurement rule types (Spot, Line, Area)
Temperature Alarm	Over temperature alarm, Temperature difference alarm
Accuracy	±2°C / ±2%
Response Time	≤ 30ms
Temperature Measurement Range	-40°C ~ 150°C (-40°F ~ 302°F)
Temperature Display Mode	Temperature target >5℃, Display absolute temperature value, Temperature target ≤5℃ Display relative temperature value (temperature difference DEV = highest value - average)

NETWORK

Ethernet	RJ-45 (10/100Base-T)
Protocols	IPv4/IPv6 ,HTTP,RTSP/RTP/RTCP, TCP/UDP, DHCP, DNS, PPPOE, SMTP, 802.1x, Modbus
Interoperability	ONVIF, CGI, SDK
Streaming Method	Unicast
Max. User Access	10 Users
Edge Storage	Local PC for instant recording
Web Viewer	<IE11, Chrome, Firefox, Microsoft Edge
Web Language	English, Chinese, Polish, Italian, Portuguese, Spanish, Russian, French, Czech, Hungarian

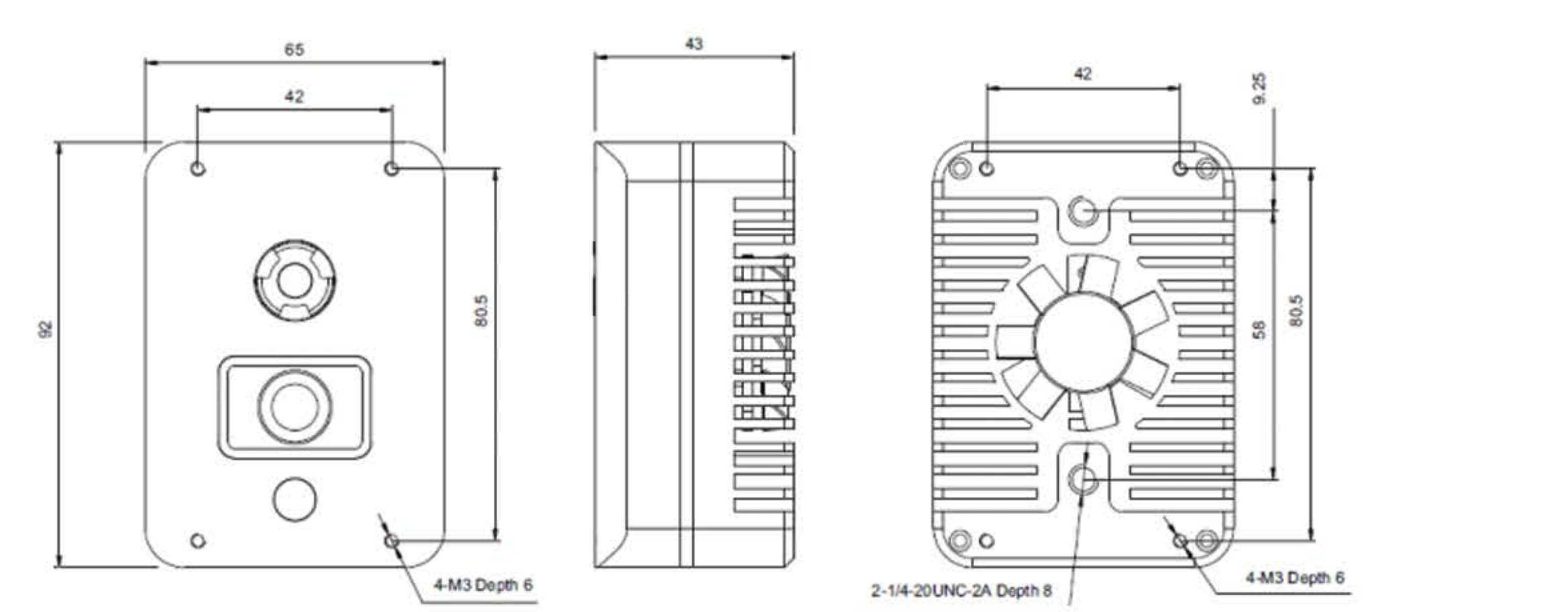
INTERFACE

Ethernet	1 Ethernet (10/100 Base-T) RJ-45 Connector
Audio Interface	N/A
Alarm	1ch Alarm Input, 1ch Alarm Output
RS485	Support
USB Interface	Support
BNC Output	Support
Reset Button	Support (Built-in)

GENERAL

Power Supply	DC12V ±10%
Power Consumption	Max 10 W
Working Temperature	-20°C~60°C(-4°F~140°F)
Storage Conditions	0~ 90% RH
Certifications	CE/FCC
Ingress Protection	IP66
Casing	Metal
Dimensions	63 × 43 × 92mm (2.48 × 1.69 × 3.62 inch)
Net Weight	450 g (0.99 lb)

Dimensions (mm)



Accessories (optional)

